

SAFETY FLANGE TOOLS ARE BEST TOOLS

FLANGE SPREADING TOOLS & KIT ATEX

- 9.0T MECHANICAL FLANGE SPREADER
- 15.5T HYDRAULIC FLANGE SPREADER
- 14.5T HYDRAULIC FLANGE SPREADER

NUT CUTTING

- SW13-SW105 HYDRAULIC NUT CUTTER

FLANGE ALIGNMENT TOOLS & KITS

- 4.0T MECHANICAL FLANGE ALIGNMENT TOOL
- 9.0T HYDRAULIC FLANGE ALIGNMENT TOOL

PRECISION LIFTING & LOWERING TOOLS

- 18.0T HYDRAULIC LIFTING WEDGES

SEALED HAND-PUMP ATEX & KITS

- HAND PUMP SINGLE PORT
 - HAND PUMP TWIN PORT
- HAND PUMP KIT WITH HOSE
- HAND PUMP KIT WITH HOSE ATEX

HSW15TEX Single & Twin Kit

HYDRAULIC FLANGE SPREADER WEDGE ATEX SINGLE & TWIN KIT

This is a general-purpose spreading wedge for a flange joint with a minimum access gap of 6mm. It is actuated by an external hand pump (P350AEX or P350BEX) and is ATEX certified for use in the hazardous areas in zones 1 and 2.

TOOL CAPABILITIES

SPREADING FORCE

with 700bar hydraulic pressure applied:

- 15.5T (155kN)

SPREADING DISTANCE

- 6.0mm - 31.0mm
using only 1st step
- 6.0mm - 62.0mm
using 4 steps (without stepped blocks)
- 31.0mm - 81.0mm
using optional stepped blocks kit

TOOL WEIGHT: 7.0kg



Product Code	Tool	Pump kit	incl. hose	In Case
HSW15TEX single kit	1 x HSW15TEX	-	-	Yes
HSW15TEX twin kit	2 x HSW15TEX	-	-	Yes
HSW15TEXHPA single kit	1 x HSW15TEX	HP350A	1 x HH180	Yes
HSW15TEXHPB twin kit	2 x HSW15TEX	HP350B	2 x HH180	Yes
HSW15TEXHPAEX single kit	1 x HSW15TEX	HP350AEX	1 x HHEX180	Yes
HSW15TEXHPBEX twin kit	2 x HSW15TEX	HP350BEX	2 x HHEX180	Yes

HSW15TSCEX

INTEGRAL HYDRAULIC FLANGE SPREADER WEDGE ATEX

This general-purpose, self-contained spreading wedge for a flange joint with a minimum access gap of 6mm is actuated by an integral hydraulic hand-pump; therefore, no hoses or external pumps are required. It is ATEX certified for use in the hazardous areas in zones 1 and 2.

TOOL CAPABILITIES

SPREADING FORCE

with 700bar hydraulic pressure applied:

- 14.5T (145kN)

SPREADING DISTANCE

- 6.0mm - 31.0mm
using only 1st step
- 6.0mm - 62.0mm
using 4 steps (without stepped blocks)
- 31.0mm - 81.0mm
using optional stepped blocks kit

TOOL WEIGHT: 9.0kg



Product Code	Tool with Integral Pump	In Case
HSW15TSCEX	HSW15TSCEX	Yes

MSW9TEX Single & Twin Kit

MECHANICAL FLANGE SPREADER WEDGE ATEX

The general-purpose, entry level spreading wedge for a flange joint with a minimum access gap of 6mm is mechanically operated using the supplied torque wrench. It is ATEX certified for use in the hazardous areas in zones 1 and 2.

TOOL CAPABILITIES

SPREADING FORCE

with 203N.m (150ft.lb) torque applied:

- 9.0T (90kN)

SPREADING DISTANCE

- 6.0mm - 31.0mm
using only 1st step
- 6.0mm - 62.0mm
using 4 steps (without stepped blocks)
- 31.0mm - 81.0mm
using optional stepped blocks kit

TOOL WEIGHT: 5.5kg



Product Code	Tool	In Case
MSW9TEX single kit	1 x MSW9TEX	Yes
MSW9TEX twin kit	2 x MSW9TEX	Yes

HMSP

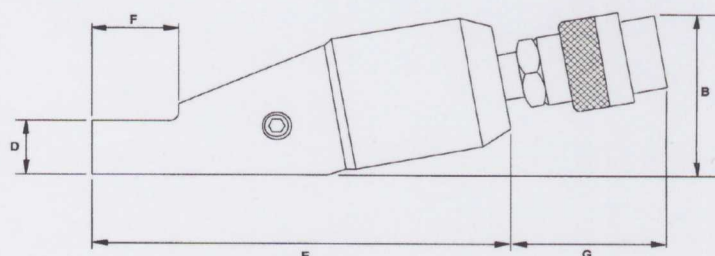
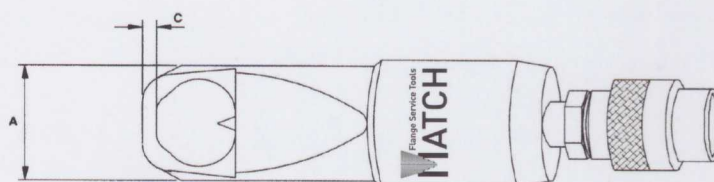
Hydraulic Nut Cutter

The compact design is optimal in a confined space with enough force to split the rusted nuts with Max Hardness HRC44. The Nut Cutter is operated by an external hydraulic hand-pump (P350AEX, P550AEX or P1000AEX).

TOOL CAPABILITIES

Hexagon Nut Range (mm) SW13-105
Bolt Range M6-M72

Product Code	Hexagon Nut Range (mm)	Bolt Range (mm)
HMSP 1319	13-19	M6-M12
HMSP 1924	19-14	M12-M16
HMSP 2432	24-32	M16-M22
HMSP 3241	32-41	M22-M27
HMSP 4150	41-50	M27-M33
HMSP 5060	50-60	M33-M39
HMSP 6075	60-75	M39-M48
HMSP 7590	75-90	M48-M60
HMSP 90105	90-105	M60-M72



MFA4T

MECHANICAL FLANGE ALIGNMENT TOOL

The tool is designed to lift, lower and re-alignment of misaligned flanges. It is mechanically operated using the supplied torque wrench.

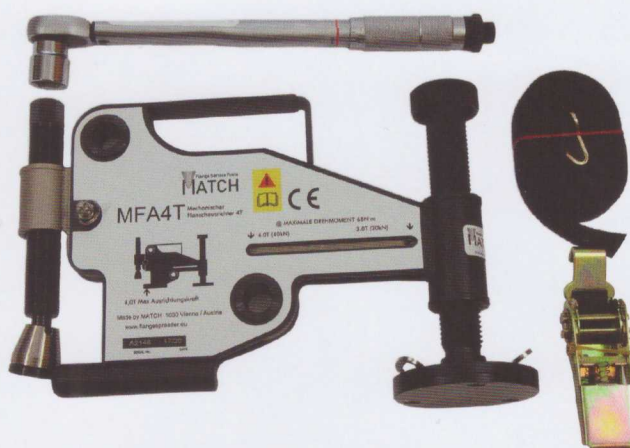
TOOL CAPABILITIES

ALIGNING (LIFTING) FORCE
from 67,8 Nm of torque
• 4.0T (40 kN)

WING EXTENSION
• 45mm - 158mm

MINIMUM APPLICABLE BOLT HOLE DIAMETER
• 25mm (1.0")

TOOL WEIGHT: 8.6kg



Product Code	Tool	In Case
MFA4T	MFA4T	Yes

HFA9T

HYDRAULIC FLANGE ALIGNMENT TOOL

The tools is designed to lift, lower and re-alignment of misaligned flanges. It is actuated by an external hydraulic hand-pump, P350AEX.

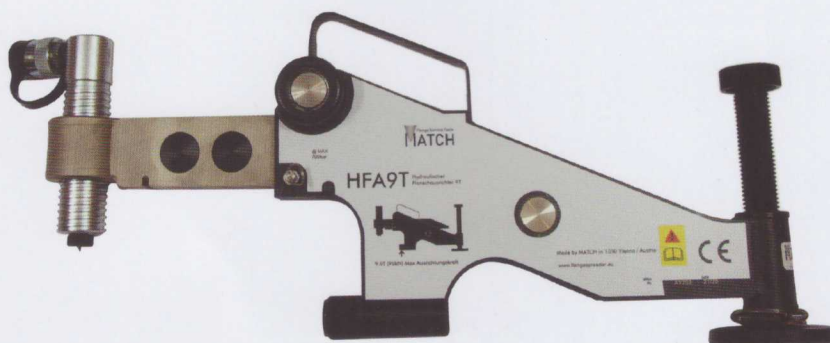
TOOL CAPABILITIES

ALIGNING (LIFTING) FORCE
with 700bar hydraulic pressure applied:
• 9.0T (90 kN)

WING EXTENSION
• 105mm - 240mm

MINIMUM APPLICABLE BOLT HOLE DIAMETER
• 35,5mm (1.4")

TOOL WEIGHT: 14.5kg



Product Code	Tool	Pump kit	incl. hose	In Case
HFA9T	HFA9T	-	-	Yes
HFA9THP kit	HFA9T	HP350AEX	1 x HH180	Yes

HPLW18T Single und Twin Kit

HYDRAULIC PRECISION LIFTING WEDGE SINGLE & TWIN KIT

This kit is designed to lift or lower objects in a controlled manner. The HPLW range will give a safe, smooth, secure hold when lifting or lowering heavy equipment. This tool will lift an object in a stable movement from an access gap of only 9.5mm. It is actuated by an external hydraulic hand-pump (P350AEX or P350BEX).

TOOL CAPABILITIES

LIFTING FORCE

with 700bar hydraulic pressure applied:

- 18.0T (180 kN)

LIFTING DISTANCE

- 0.95mm - 29,50mm
using only 1st step
- 0.95mm - 51,50mm
using 4 steps (without stepped blocks)
- 0.95mm - 67.5mm
using optional stepped block kit

TOOL WEIGHT: 8.5kg



Product Code	Tool	Pump kit	incl. hose	In Case
HPLW18T0	1 x HPLW18T	-	-	No
HPLW18T single kit	1 x HPLW18T	-	-	Yes
HPLW18T twin kit	2 x HPLW18T	-	-	Yes
HPLW18THPA single kit	1 x HPLW18T	HP350A	1 x HH180	Yes
HPLW18THPB twin kit	2 x HPLW18T	HP350B	2 x HH180	Yes

HPLW18TC Integral Kit

HYDRAULIC PRECISION LIFTING WEDGE INTEGRAL KIT

This kit is designed to lift or lower objects in a controlled manner. The HPLW range will give a safe, smooth, secure hold when lifting or lowering heavy equipment. This tool will lift an object in a stable movement from an access gap of only 9.5mm. It is actuated by an integral hydraulic hand-pump, therefore, no hoses or external pumps are required.

TOOL CAPABILITIES

LIFTING FORCE

with 700bar (10,000psi) hydraulic pressure applied:

- 18.0T (180 kN)

LIFTING DISTANCE

- 0.95mm - 29,50mm
using only 1st step
- 0.95mm - 51,50mm
using 4 steps (without stepped blocks)
- 0.95mm - 67.5mm
using optional stepped block kit

TOOL WEIGHT: 12.0kg



Product Code	Tool with Integral Pump	In Case
HPLW18TC	HPLW18TC	Yes

HAND PUMP SINGLE PORT

HYDRAULIC SINGLE PORT SEALED HAND PUMP ATEX 700 bar

This pump is specially designed to operate in ALL directions. It may be used with any 700 bar tools within their oil capacity specification, for example with HSW15TEX Single Kit, HFA9T, HPLW18T Single Kit, HMSP. Each pump Kit includes a Gauge, an Adaptor and a Coupler. It is ATEX certified for use in the hazardous areas in zones 1 and 2.

TOOL CAPABILITIES

MAX PRESSURE RATING

1st Stage : 13,8 bar
2nd Stage : 700 bar

OIL CAPACITY

350cc ; 550cc ; 1000cc



Product Code	Pump kit incl. Gauge, Adapter and Coupler
P350AEX	Yes
P550AEX	Yes
P1000AEX	Yes

HAND PUMP TWIN PORT

HYDRAULIC TWIN PORT SEALED HAND PUMP ATEX 700 bar

This pump is specially designed to operate in ALL directions. It may be used with any 700 bar tools within their oil capacity specification, for example with HSW15TEX Twin Kit, HPLW18T Twin Kit. Each pump Kit includes a Gauge, an Adaptor and a Coupler. It is ATEX certified for use in the hazardous areas in zones 1 and 2.

TOOL CAPABILITIES

MAX PRESSURE RATING

1st Stage : 13,8 bar
2nd Stage : 700 bar

OIL CAPACITY

350cc ; 550cc ; 1000cc



Product Code	Pump kit incl. Gauge, Adapter and Coupler
P350BEX	Yes
P550BEX	Yes
P1000BEX	Yes

HAND PUMP KIT WITH HOSE

HYDRAULIC SINGLE OR TWIN PORT SEALED HAND PUMP KIT WITH HOSE 700 bar

This kit is specially designed to operate in ALL directions. Can be used with any 700 bar tools within their oil capacity specification, for example with HSW15TEX, HFA9T, HPLW18T, HMSP. Each pump Kit includes a Gauge, an Adaptor, a Coupler and 1,80m Hose.

TOOL CAPABILITIES

MAX PRESSURE RATING

1st Stage : 13,8 bar

2nd Stage : 700 bar

OIL CAPACITY

350cc

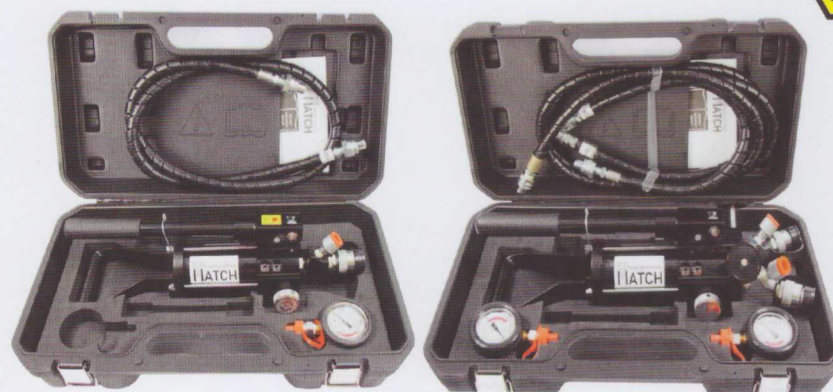


Product Code	Pump kit incl. Gauge(s), Adapter(s) and Coupler(s)	incl. hose	In Case
HP350A	P350AEX	1 x HH180	Yes
HP350B	P350BEX	2 x HH180	Yes

HAND PUMP KIT WITH HOSE ATEX

HYDRAULIC SINGLE OR TWIN PORT SEALED HAND PUMP KIT WITH HOSE ATEX 700 bar

This kit is specially designed to operate in ALL directions. It may be used with any 700 bar tools within their oil capacity specification, for example with HSW15TEX, HFA9T, HPLW18T, HMSP. Each pump Kit includes a Gauge, an Adaptor, a Coupler and 1,80m Hose. It is ATEX certified for use in the hazardous areas in zones 1 and 2.



TOOL CAPABILITIES

MAX PRESSURE RATING

1st Stage : 13,8 bar

2nd Stage : 700 bar

OIL CAPACITY

350cc ; 550cc ; 1000cc

Product Code	Pump kit incl. Gauge(s), Adapter(s) and Coupler(s)	incl. hose	In Case
HP350AEX	P350AEX	1 x HHEX180	Yes
HP350BEX	P350BEX	2 x HHEX180	Yes